

water.ie/nwrp

UISCE
ÉIREANN : IRISH
WATER

National Water Resources Plan

Phase 1

NWRP draft Framework Plan
Statutory Consultation





Part of **ervia** group

National Water Resources Plan (NWRP)


The plan will set out how we can **balance the amount of drinking water we can supply with the demand for water that is needed over the short, medium and long term.**





 **Calculate the demand for water** from homes, businesses, farms and industry now and into the future

 **Assess the amount of water** we have available



 **Identify areas** where there is not enough water supply to meet demand or where there are risks to water quality

 **How climate change** will impact our water

 **Develop a national plan** to ensure there will be enough water to meet demand and address any risks to water quality

 **Develop a methodology** to assess the need and options appraisal process we will use within our plan

Our three pillar approach will ensure we have a safe, secure, reliable and sustainable drinking water supply for everyone

Lose Less



Reduce leakage

Use Less



Improve water efficiency

Supply Smarter



Improve infrastructure

National Water Resources Plan

Irish Water's National Water Resources Plan (NWRP) is our 25 year plan to identify how we will provide a safe, secure, reliable and sustainable water supply to our customers for now and into the future.

The plan identifies the water we have, the water we use, the water we need and where and when we need it. It identifies the risks with our current supplies and allows us to identify options to address our water supply issues over the short, medium and long term. It will also ensure that our supplies are reliable, and meet the quality standards required.

Why do we need a National Water Resources Plan?

Water is part of our everyday lives, we need it when we turn on the taps to get a drink, to wash our dishes and clothes, to have a shower and to flush the toilet. Businesses throughout the country also depend on a reliable water supply, from coffee shops and restaurants, to hairdressers, and farming enterprises right up to multi-national companies. It is essential to everything we do.

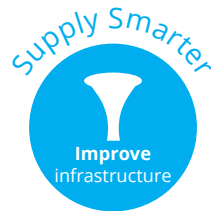
Our water infrastructure is already under increasing pressure to meet the current demand for water as a result of population growth, climate change, and our changing environment. The quality of our drinking water can be affected in many ways including soil or rock types, land use practices, pollution, and even heavy rainfall. To prevent unplanned water outages, water conservation orders, reductions in pressure or restrictions to water supplies, we have to plan ahead. How we choose to plan our water resources today will determine the water supply we can provide now and into the future.

Our solution

Irish Water aims to ensure that all of our customers have a safe and reliable drinking water supply and to safeguard our water for our future. Our plan is to use a three-pillar approach:

1. To **lose less** by reducing the amount of water lost through leakage.
2. To **use less** by encouraging us all to use less water in our everyday lives, improving water efficiency in our homes, businesses, farms and through our own operations.
3. To **supply smarter** by improving the quality, resilience and security of our water supplies through infrastructure and operations improvements and developing new sustainable sources of water.

The NWRP sets out how we do this.



What is the benefit of the National Water Resources Plan?

The National Water Resources Plan will:

- Improve the level of service to our customers and communities;
- Support growth and development;
- Be resilient in order to mitigate the impacts of climate change; and
- Be sustainable in order to protect the environment.



NWRP draft Framework Plan

The preparation of the NWRP provides, for the first time, an opportunity to strategically and consistently plan the way that drinking water services are delivered in Ireland at a national level.

Phase one of the development of the NWRP consists of a draft Framework Plan which we are currently consulting on with the accompanying SEA Environmental Report and Natura Impact Statement.

The draft Framework Plan considers:

- How we assess water quantity need through the Supply Demand Balance;
- How we assess water quality and reliability need by looking at how our existing assets are performing;
- How we address sustainability by ensuring that all new options for water supply must be based on conservative approaches to protecting water sources; and
- Our Options Assessment Process - how we find solutions to address the needs we have identified.

We are asking for your feedback on all of the points outlined on the previous page. Please visit www.water.ie/nwrp for more information.

For illustrative purposes we have also included a Case Study to demonstrate how the methodology is applied to an area. Stakeholders can refer to it to support their submissions and observations on the methodology but will not be able to influence the options for the Case Study area until a later stage of the NWRP process.

The NWRP is subject to Strategic Environmental Assessment (SEA) and Appropriate Assessment (AA). This ensures that we evaluate environmental impacts likely to arise from the plan, both positive and negative, and outline the appropriate prevention and alleviation measures.





How can I get involved?

Irish Water is now inviting feedback on the NWRP draft Framework Plan and associated SEA Environmental Report and Natura Impact Statement (NIS).

A ten-week statutory public consultation will run from Tuesday 8 December 2020 to Tuesday 16 February 2021 during which time the NWRP draft Framework Plan and associated environmental reports can be viewed and downloaded at **www.water.ie/nwrp** and at your local authority's planning office or County Library (depending on the local authority) during their normal opening hours.

This is your opportunity to feed into the process of how we identify the issues and opportunities for the water supply in your area and how we find solutions, before we apply them to your Region as part of the second phase of the NWRP.

All submissions will be reviewed and relevant feedback incorporated into the final NWRP Framework Plan and associated SEA Statement and Appropriate Assessment determination.

Submissions from individuals will be reported anonymously and feedback from organisations will be attributed to them. Submissions will not be individually responded to but will be summarised in a second consultation report which will be published on www.water.ie/nwrp

View our privacy notice at www.water.ie/privacy-notice

Have your say

If you would like to make a submission, please send it by email or post by **Tuesday 16 February 2021**

Email: nwrp@water.ie

Post: National Water Resources Plan,
Irish Water, P.O. Box 13216,
Glenageary, Co. Dublin

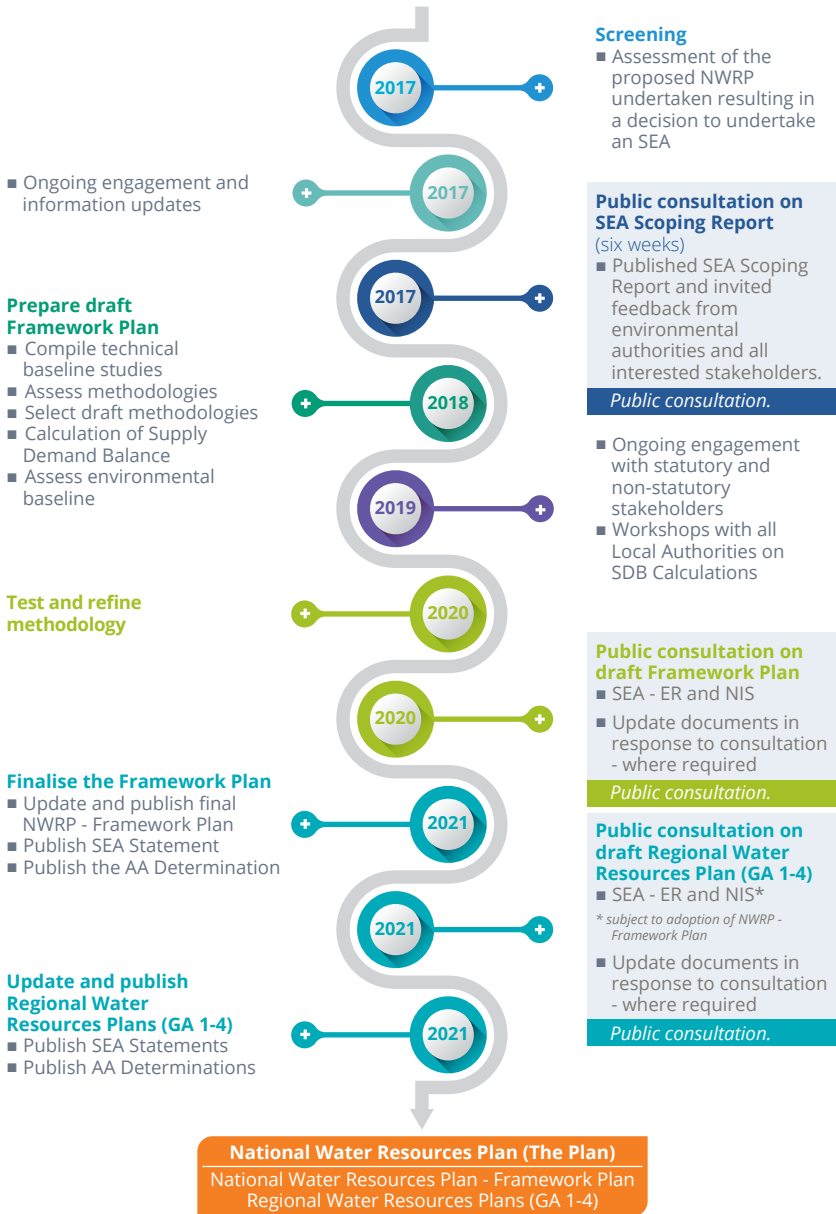
Freephone: 1800 46 36 76

The consultation questions

In order to help you in making a submission we are inviting feedback on the following consultation questions:

1. Do you have any suggestions that you would like Irish Water to consider as part of the draft Framework Plan?
2. Do you have any suggestions that you would like Irish Water to consider as part of how we assess supply/ demand balance, water quality, quantity and resilience?
3. The draft Framework Plan sets out Irish Water's methodology to find high level solutions to address short, medium and long-term issues. Do you have any comments on our methodology?
4. Do you have any comments on the Strategic Environmental Assessment (SEA) Environmental Report and associated Natura Impact Statement (NIS) which accompanies the draft Framework Plan?
5. The project roadmap has been updated. Do you have any comments or feedback on this?
6. How would you like Irish Water to communicate with you as the NWRP progresses?

NWRP Consultation Roadmap



Next steps

Following on from the public consultation on the draft Framework Plan, there is still some important work to be done before the Framework Plan is finalised.

The submissions and observations received from public consultation will be taken into consideration, and the Framework Plan updated.

The final Framework Plan will be adopted in early 2021, alongside the SEA Statement and AA Determination. The SEA statement will outline the issues raised and demonstrate the amendments that were made to the Framework Plan as a result of the consultation.

Phase 2 comprises four Regional Water Resources Plans each of which will be subject to Strategic Environmental Assessment and Appropriate Assessment. Each of the four regions will also have their own public consultation phases. These public consultations will take place throughout 2021.



Contact details

To make a submission on the Draft NWRP or for further information please contact:

Email: **nwrp@water.ie**

Web: **www.water.ie/nwrp**

Freephone: **1800 46 36 76**

**National Water
Resources Plan,
Irish Water,
P.O. Box 13216,
Glenageary, Co. Dublin**

General queries

9am-5.30pm, Mon-Fri

Telephone: **Callsave 1800 278 278** or **+353 1 707 2828**

Minicom: **LoCall 1890 378 378** (for hearing impaired customers with their own minicom equipment).

Please note that the rates charged for 1850 (Callsave) and 1890 (LoCall) numbers may vary across different service providers. Calls made using mobiles may be more expensive.

ervia

Aurora
TELECOM



Gas
Networks
Ireland

UISCE
WATER